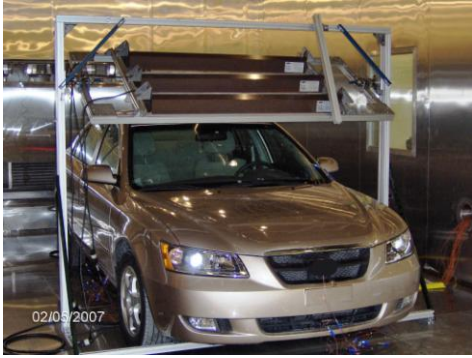




DETROIT TESTING LABORATORY, INC.



Full-Vehicle and Large Product Environmental Chambers

DTL has the capability to test large products including passenger vehicles, military vehicles, and aircraft components. Test items can be functionally testing while experiencing environments that simulate real world temperature, humidity, and sunlight conditions. With 12 large walk-in and drive-in chambers, DTL offers more capacity in this area of environmental testing than most other labs.



Our large chambers, ranging in size from 1,000 cubic feet to over 7,000 cubic feet, offer a variety of capabilities, including interior/exterior component cycling, high temperature ramp, operational durability of vehicles, agricultural equipment and generators, and sun exposure testing under temperature and humidity extremes for Photovoltaic Cells.



Walk-in Component Thermal Humidity Chambers

- Six (6) Chambers Available
- Up to 2000 cubic feet
- Temperature Cycling (-73°C to +177°C) with Humidity to 95%
- Simulated Sunlight (Infrared Light Banks)

Drive-in/Large Component Thermal Humidity Chambers

- Six (6) Chambers Available
- Up to 7000 cubic feet
- Heavy duty floors capable of accommodating heavy test items
- Temperature Cycling (-73°C to +121°C) with Humidity to 95%
- Fast Ramp Temperature Cycling Available
- Exhaust System for Vehicle Operation
- Inergen® Fire Suppression Safety System
- LEL and CO2 Monitoring
- Simulated Sunlight (Infrared Light Banks)

For further information contact:

Mary Byl

Account Manager

Direct Dial: (586) 757-3283

Cell Phone: (313) 407-7075

E-mail: mbyl@dtl-inc.com

DETROIT TESTING LABORATORY, INC.

27485 George Merrelli Drive

Warren, MI 48092

(586) 754-9000

www.dtl-inc.com